

FLANGE CONNECTIONS

For PE pipes, restraint, PN 10 | PN 16



Design features

- For PE pipes according to EN 12201, DIN 8074
- Flange sized in accordance with EN 1092-2, drilled in accordance with EN 1092-2 | PN 10 standard; PN 16 for DN 200 please specify on order - other standards on request

No. 0310 / 0311:

- Flange adapter with PE fusion tail
- In a flange with a combined push-screw socket, a PE fusion socket is inserted from factory
- High performance sealing of the PE tail is assured by two separate seals and a stainless steel support liner within the tail
- The fusion of the valve in the PE line can take place through butt fusion or electrofusion socket; twisting is not permissible after fusion of the valve

No. 5500 / 5530:

- Flange with ISO pipe socket
- The sealing and hold function acts exclusively on the external diameter of the pipe
- Corresponding to the line pressure and/or mechanical tensile forces, the seal and grip ring are pressed into the conical chamber, which increases its effectiveness
- Assembly instructions see Page K 3/2

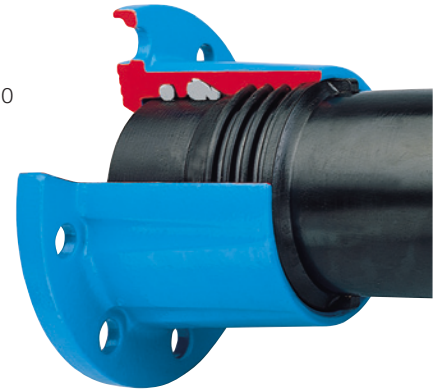
Flange adapter with PE fusion tail

No. 0310

PE 100 / SDR 11 - PN 16

No. 0311

PE 100 / SDR 17,6 - PN 10



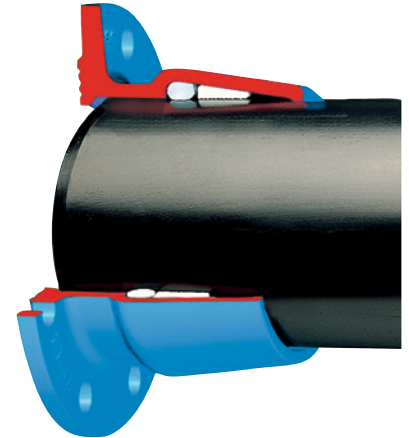
ISO pipe flange adapter

No. 5500

equal

No. 5530

reducing



Material | Technical features

- **Flange** made of ductile iron, epoxy powder coated
- **Fusion tail** made of PE 100
- **Support liners** made of stainless steel (No. 0310, No. 0311)
- **Seals** made of elastomer
- **Grip ring** made of POM

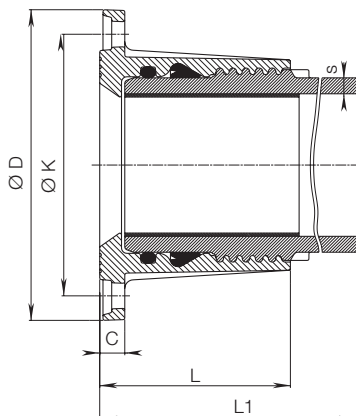
Order No.	Version	MOP (PN)	Flange DN / Ø pipe																	
			40 32	40 40	40 50	50 50	50 63	60 63	60 75	65 63	65 75	80 75	80 90	100 90	100 110	100 125	150 160	150 180	200 200	200 225
0310	Flange with PE fusion tail	16																		
0311		10																		
5500	ISO pipe flange, equal	16																		
5530	ISO pipe flange, reducing																			

FLANGE CONNECTIONS

For PE pipes, restraint, PN 10 | PN 16

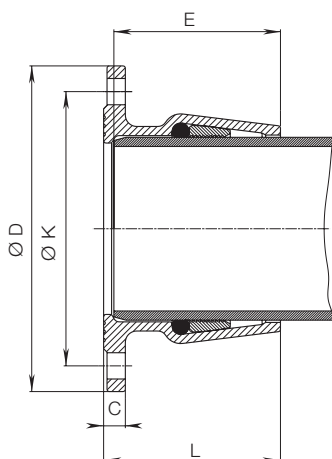


No. 0310 / 0311



Flange DN	Ø Pipe	ØD	ØK	C	L	L1	s		Bolts		Weight
							SDR 17,6	SDR 11	Quantity	Thread	
50	63	165	125	19	106	291		5,8	4	M 16	4,0
80	90	200	160	20	125	305	5,1	8,2	8	M 16	6,7
100	110	220	180	21	142	327	6,3	10,0	8	M 16	9,3
100	125	220	180	19	190	373		11,4	8	M 16	12,4
150	160	285	240	23	175	358	9,1	14,6	8	M 20	16,0
150	180	285	240	20	260	437	10,2	16,4	8	M 20	23,0
200	200	340	295	20	210	403		18,3	8	M 20	28,0
200	225	340	295	20	210	403	12,8	20,5	8	M 20	28,0

No. 5500



Flange DN	Ø Pipe	ØD	ØK	C	L	E	Bolts		Weight
							Quantity	Thread	
40	50	150	112	23	97	93	4	M 16	2,5
50	63	165	125	23	94	80	4	M 16	3,2
60	75	175	138	24	105	100	4	M 16	3,9
65	75	185	145	24	105	99	4	M 16	4,0
80	90	200	160	24	101	96	8	M 16	4,2
100	110	220	180	25	124	119	8	M 16	6,7

No. 5530

Flange DN	Ø Pipe	ØD	ØK	C	L	E	Bolts		Weight
							Quantity	Thread	
40	32	150	110	19	66	62	4	M 16	1,7
40	40	150	110	21	85	80	4	M 16	2,4
50	50	165	125	23	97	93	4	M 16	3,0
60	63	175	135	24	94	90	4	M 16	3,6
65	63	185	145	24	94	90	4	M 16	4,2
80	75	200	160	24	105	100	8	M 16	5,0
100	90	220	180	25	101	96	8	M 16	5,9