



HAWLE-**SYNOFLEX**

restraint multi-range connection for all common types of pipes



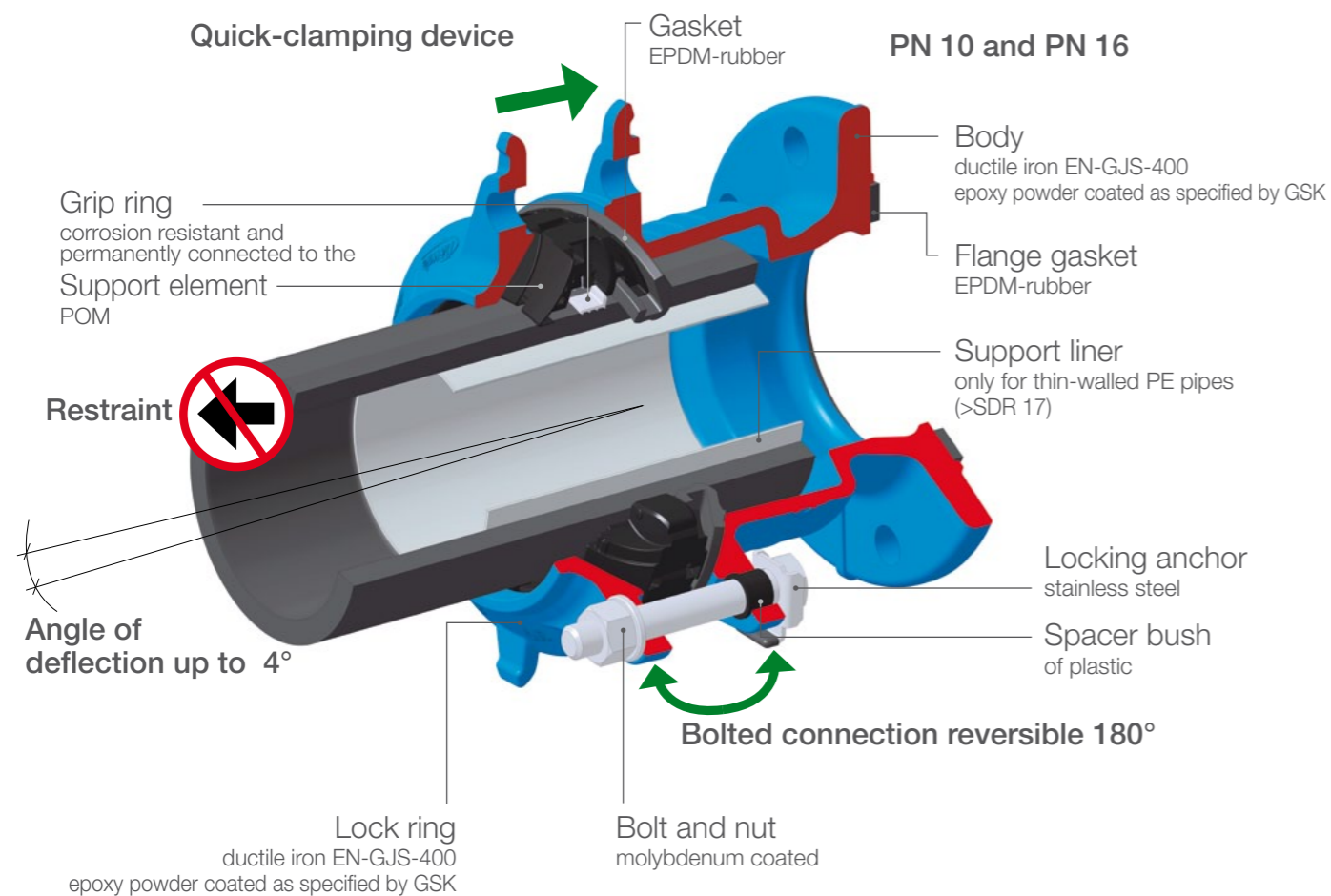
HAWLE. **MADE FOR GENERATIONS.**



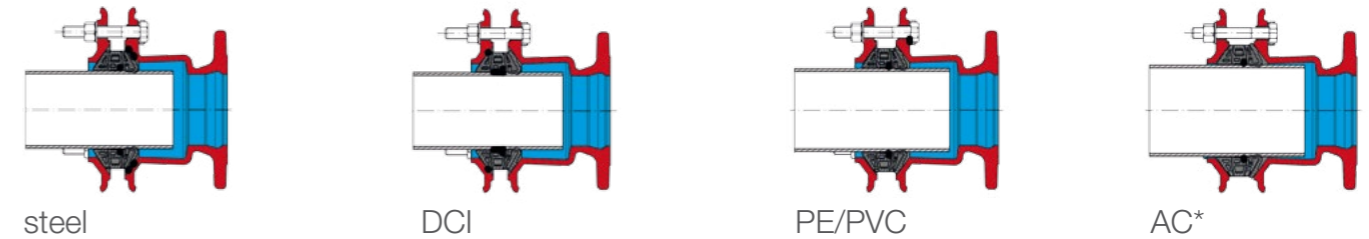
HAWLE-SYNOFLEX

restraint multi-range connection for all common types of pipes

The HAWLE-SYNOFLEX socket system provides high quality restraint connections to all common water supply pipes. The patented HAWLE-SYNOFLEX secures steel, DCI, PE/PVC and AC* pipes with fully corrosion protected connections.



FOR ALL COMMON TYPES OF PIPES



* Warning! A restraint connection between Synoflex and asbestos cement pipes can't be confirmed. Removal of the grip ring is not necessary.

ADVANTAGES OF HAWLE-SYNOFLEX

- Durable**
 The proven epoxy powder coating as specified by GSK (the Quality Association for the Heavy Duty Corrosion Protection of Powder Coated Valves and Fittings) provides excellent corrosion protection. Bolts, nuts, washers and locking pistons are made of A4 high grade stainless steel.
- Adaptable**
 Improving in the trench is easy when using HAWLE-SYNOFLEX. With a tolerance of 4° angular deflection at both pipe ends, all types of pipes and the combinations thereof can be connected with HAWLE-SYNOFLEX. The Molybdenum coated bolts can be extracted and inserted again on the opposite side for easy one hand tightening from the inside in areas that are too tight for wrench access.
- Easy to install**
 By pinching the quick-clamping lug, the SYNOFLEX grip ring quickly conforms to the pipe. Tighten the nuts while keeping the SYNOFLEX in correct position. Due to the bolt anchor, the bolts can be tightened with only one hand. The Molybdenum coated bolts counteract friction with the nut for easy assembly.
- Reliable**
 HAWLE-SYNOFLEX ensures a restraint connection for all common pipe materials. The clamping elements holds the pipe securely without damaging it. The elastomer gasket fits snugly around the pipe, creating an effective seal. The pipe will not move inwards when tightening.
- 10 year factory warranty**
 Your safety is assured through decades of experience in making pipeline connections at HAWLE, backed up with a 10 year quality on all HAWLE-SYNOFLEX products.
- Cost-saving**
 The HAWLE-SYNOFLEX product range covers most of the installation situations. Due to its flexible range, the HAWLE-SYNOFLEX saves cost by reducing the number of pipeline connectors needed in the warehouse.

HAWLE - GUARANTEE OF QUALITY



RANGE OF PRODUCTS



| DN | PN | Adjusting range Synoflex Socket | 7994 Synoflex Flange E-Piece / ER-Piece | | 7974 Synoflex Connector U-Piece / UR-Piece | | 7975 * SYNO2000 Connector U-Piece | | 7976 SYNOZAK Connector U-Piece | | 7980 Synoflex End cap X-Piece | 7981 Synoflex Duckfoot bend | |
|-----|----|---------------------------------------|---|--------|--|--------|---|-----------------------|--------------------------------------|----------------------|-------------------------------------|-----------------------------------|--------|
| | | | Flange | Socket | Socket | Socket | Synoflex Socket | System 2000 Socket | Synoflex Socket | System ZAK Socket | Socket | Flange | Socket |
| 40 | | d 46 - 58 | | | DN 40 | DN 40 | | | | | | | |
| 50 | | d 56 - 71 | DN 50 | DN 50 | DN 50 | DN 50 | DN 50 | da 63 | DN 50 | ZAK 46 | DN 50 | | |
| 65 | | d 71 - 88 | DN 65 | DN 65 | DN 65 | DN 65 | | | | | | | |
| 80 | | d 85 - 105 | | DN 65 | DN 80 | DN 65 | DN 80 | da 90 | | | DN 80 | DN 80 | DN 80 |
| | | | | DN 80 | | DN 80 | | | | | | | |
| | | | | DN 100 | | DN 100 | | | | | | | |
| 100 | | d 104 - 132 | | DN 80 | DN 100 | DN 80 | DN 100 | da 110 | | | DN 100 | DN 100 | DN 100 |
| | | | | DN 100 | | DN 100 | | | | | | | |
| | | | | DN 125 | | DN 125 | | | | | | | |
| 125 | | d 131 - 160 | | DN 100 | DN 125 | DN 100 | DN 125 | | | | DN 125 | | |
| | | | | DN 125 | | DN 125 | | | | | | | |
| | | | | DN 150 | | DN 150 | | | | | | | |
| 150 | 16 | d 155 - 192 | | DN 125 | DN 150 | DN 100 | DN 150 | da 160 | | | DN 150 | | |
| | | | | DN 150 | | DN 125 | | | | | | | |
| | | | | DN 200 | | DN 150 | | | | | | | |
| 200 | | d 198 - 230 | | DN 150 | DN 200 | DN 150 | DN 200 | da 225 | | | DN 200 | | |
| | | | | DN 200 | | DN 200 | | | | | | | |
| | | | | DN 225 | | DN 225 | | | | | | | |
| 225 | | d 230 - 260 | | | DN 225 | DN 200 | | | | | | | |
| 250 | | d 265 - 310 | | DN 200 | DN 250 | DN 200 | | | | | | | |
| | | | | DN 250 | | DN 250 | | | | | | | |
| | | | | | | DN 300 | | | | | | | |
| 300 | | d 313 - 356 | DN 300 | DN 300 | DN 300 | DN 250 | | | | | | | |
| 350 | | d 352 - 396 | DN 350 | DN 350 | DN 350 | DN 350 | | | | | | | |
| 400 | 10 | d 398 - 442 | DN 400 | DN 400 | DN 400 | DN 400 | | | | | | | |

DN 40 - DN 400 = ÖVGW certified

*no ÖVGW certification

distributed by: