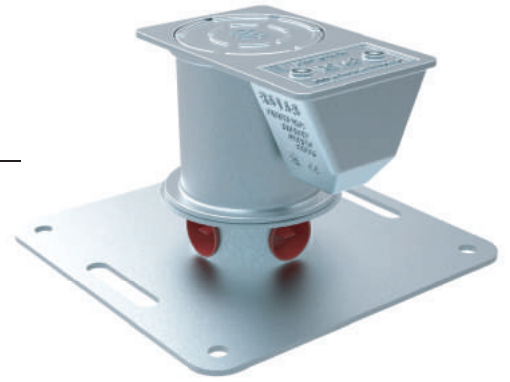


Case Study

RS168 | Richmond

Project: EV Charge Points, Richmond, London, England
Product: RS168sf sockets, Adapter Plate



RS168 | Richmond...

The rollout of rapid EV chargers in London continues at pace with the first 100 charge points milestone met in 2018 and a target of 300 set for 2020. Rapid charge points can charge an electric vehicle battery in 20-30 minutes. This is quicker than regular charge points that can take 7-8 hours for a full charge. They allow high mileage users, such as electric taxi and private hire drivers and freight and fleet operators, to quickly charge their vehicle. IPL group's RETENTION SYSTEM™ socket foundations are regularly used by Transport for London (TfL) and borough councils working with suppliers on the installation of rapid chargers. The Polar Chargemasters in Richmond are fitted in RS168df sockets with adapter plates designed to suit the units. These sockets allow the finishing of civil works before the unit is brought on site and as technology advances the units can be removed and replaced without the need for repeat excavations and expense. IPL group also supply impactable bollards and sockets to protect EV charge points.





INFRASTRUCTURE SOLUTIONS

ev charge points



RETENTION SYSTEM™

www.retention-system.com

Further information on the RETENTION SYSTEM sockets for post installation is available at www.retention-system.com. Measurements and weights are approximate. The designs are the property of Innovative Products Ltd (IPL group) and may not be reproduced without express permission. Innovative Products reserve the right to amend specifications or to withdraw models without prior notice. © April 2019.

