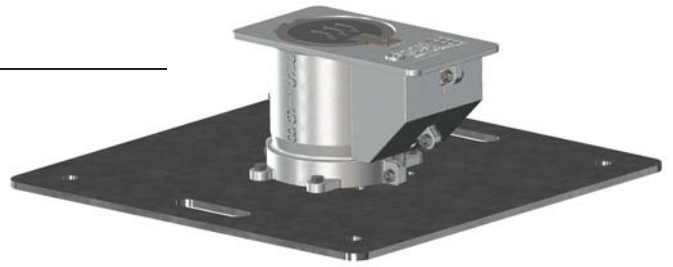


# Case Study

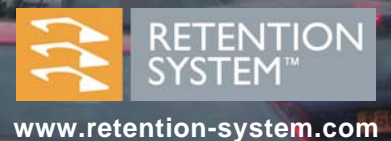
## RS168 | Worcester

**Project:** Lighting Columns, Worcester, Worcestershire, England  
**Product:** RS168bd sockets



### RS168 | Worcester...

Worcester City Council's maintenance and renewal programme for lighting columns encountered sites where the installation of new 10 metre high lighting columns was restricted by a range of existing services in the pavement. In these cases, the shallow depth RS168bd (bridge deck) socket was used to install the columns with a reduced 300mm planting depth in a reinforced foundation. The project was carried out in two phases with foundation and civil works completed first and all RS168 sockets sealed for safe pavement use, the lighting columns were then installed at a later date.



Further information on the RETENTION SYSTEM sockets for post installation is available at [www.retention-system.com](http://www.retention-system.com)  
Measurements and weights are approximate. The designs are the property of Innovative Products Ltd (IPL group) and may not be reproduced without express permission. Innovative Products reserve the right to amend specifications or to withdraw models without prior notice. © November 2010.

