



TECHNOLOG

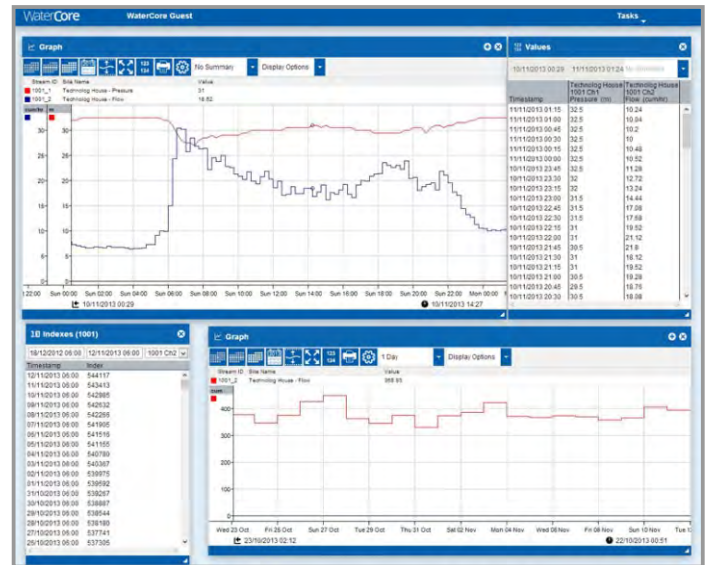
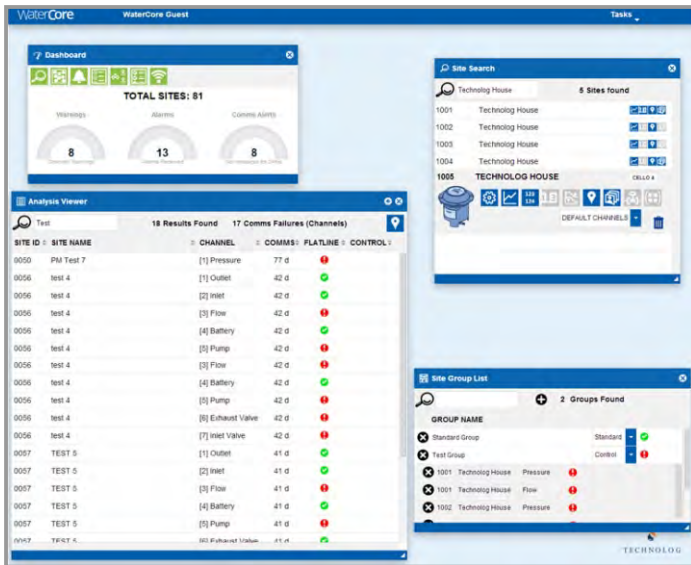


WaterCore - Cloud based data analysis software

Web based software for the automated collection of remote data, site visualisation and management.

WaterCore builds on Technolog's excellence in data logging, remote data collection and pressure management by complementing its cutting edge technology with a highly stable and configurable web based platform.

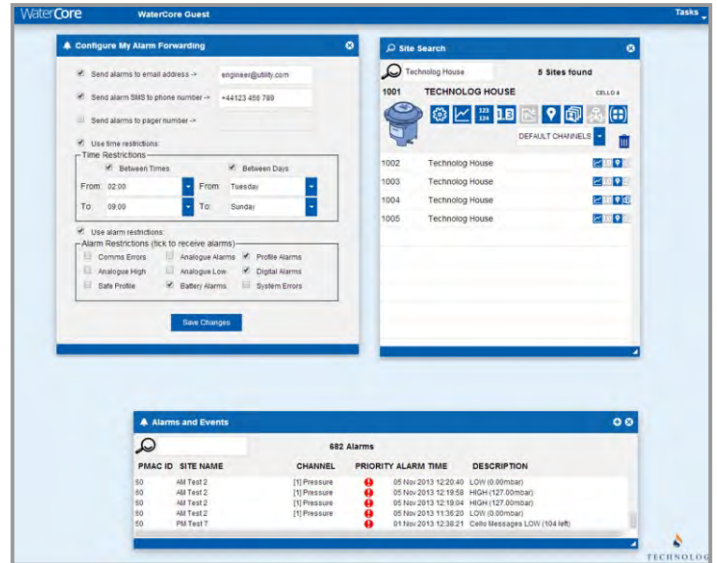
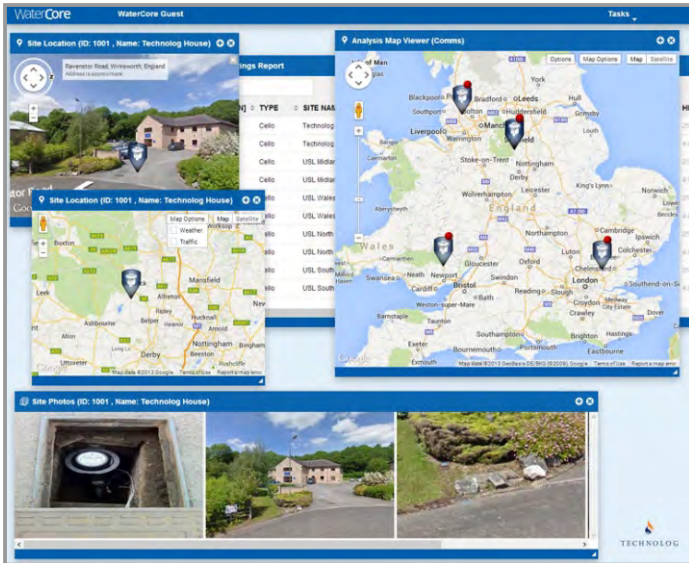
- Powerful cloud based multi-centre operation
- Data analysis and configuration of sites 'on-the-move'
- Site visibility
- Remote configuration and management of Technolog's Cello based products
- Fully compatible with all modern web browsers
- Suitable for installation on a local server and corporate intranet



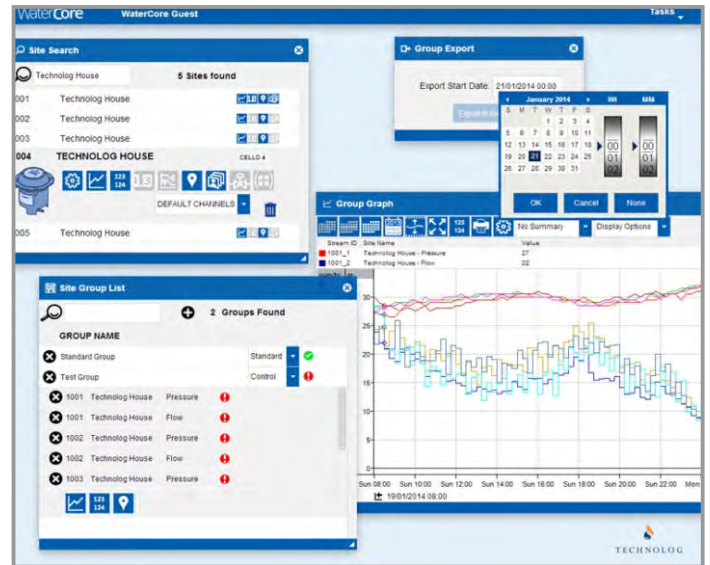
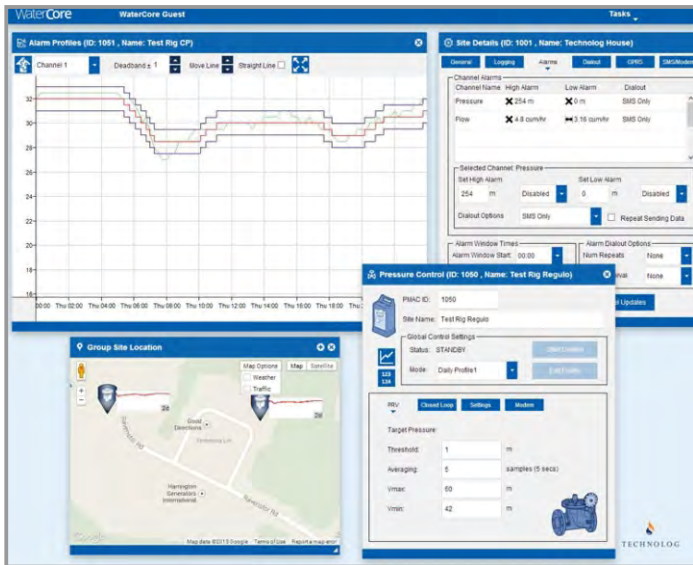
- WaterCore provides administration of multiple login accounts.
- Specified users are presented with a personalised Dashboard that provides immediate visualisation of sites, status, communications and performance.
- Analysis viewer provides both tabular and geographical interfaces to display site communication status and data verification.
- User definable pressure control groups.

- Easy graphing of sites, with options to totalise data and compare profiles.
- Fluid and intuitive graph navigation.
- Multiple sites or channels can be viewed on a single graph using a simple 'drag and drop' e.g. to compare minimum night flows or the effect of flow against multiple pressure points within a distribution network.
- Automated Meter Reading (AMR) data can be displayed in an easy to read table.

WaterCore - Cloud based data analysis software



- Google Maps are integrated with WaterCore as standard. Site locations can be plotted to allow easy location of Technolog's Cello data loggers and pressure controllers.
- WaterCore supports Google 'Street View' to allow visualisation of site locations. Site and installation photos can be uploaded.
- Satellite and terrain map views.
- WaterCore runs on a powerful database allowing multiple site parameters to be collected and stored including asset information, site hazards, installation details, site remarks etc.
- WaterCore Dashboard provides links to all current alarms and site warnings.
- Site Alarms can automatically be forwarded to one or more mobile devices or email addresses based on criteria as defined by the administrator.
- Recipients of an alarm on a mobile device may request further site information by sending an SMS message to the server.
- Groups can be easily created showing the current status of sites within a specific water supply zone.



- WaterCore allows full remote support of Technolog's data loggers and advanced pressure controllers.
- Modification of Cello and Regulo settings are based on user log-in permissions, including communication and transmission frequency, alarm profiles, thresholds, logging rate and scale factors.
- Technolog's Regulo advanced PRV and pump controllers may be remotely configured with new profiles or switched between different control modes i.e. Time, Flow or Closed Loop (real-time peer to peer control).

- Site data may be manually or automatically exported into other formats, including CSV, for further manipulation in spreadsheet packages.
- Fully compliant OPC Server with OPC AE (Alarm and Event) and OPC HDA (Historical Data) protocol components, recorded data and alarms can be sent to other client machines also supporting OPC AE and HDA
- Facilitates export of meter indices for billing and offline meter read analysis.

Technolog has been designing products and systems to the gas and water Utilities for over 30 years. WaterCore is Technolog's new cloud based platform supporting the collection, management, remote configuration and viewing of data from its range of GSM data loggers, meter readers and advanced pressure controllers.

WaterCore - Cloud based data analysis software

For further information contact:



Technolog Limited
Ravenstor Road
Wirksworth
Matlock
Derbyshire DE4 4FY
United Kingdom

Tel: +44 (0)1629 823611
Fax: +44 (0)1629 824283
Email: technolog@technolog.com
Internet: www.technolog.com

Copyright Technolog 2014
All rights reserved.
Specifications subject to change without prior notice.
DSZ109003 & DMR-N/A