

HAKU PIPE SADDLE

With flanged outlet for PE and PVC pipes



Design features

- For **PE pipes** according to EN 12201 and DIN 8074 (**SDR 7,4 and SDR 11**) for **PVC pipes** according to EN ISO 1452-2 (**SDR 13,5 and SDR 21**)
- Solid construction of ductile iron epoxy powder coated
- No deformation of the pipe
- The drilled hole is sealed by an O-ring inserted in the upper part of saddle
- The rubber linings are bonded to the lower part of saddle - this ensures positive positioning of saddle (only for d 110 to 315)
- For holes from d 355 to 630 pipes, special drilling machine is available from Hawle
- Flange sized and drilled according to EN 1092-2 | PN 16 other standards on request
- For PE pipes with protective layer, this must be removed prior to mounting the saddle

Material | Technical features

- 1 **Saddle body and segments** made of ductile iron, epoxy powder coated
- 2 **O-ring seal in the bonnet** made of elastomer
- 3 **Rubber in the lower part** of the saddle made of elastomer
- 4 **Bolts and washers** made of stainless steel
- 5 **Nuts** (Molybdenum-coated) made of stainless steel

Suitable accessories

Drilling machine for flange outlet DN 80-100: No. 5807

No. 5230



Order No.	Flange DN	MOP (PN)	Ø Pipe													
			110	140	160	180	200	225	250	280	315	355	450	500	630	
5230	80	16														
	100															
	150															

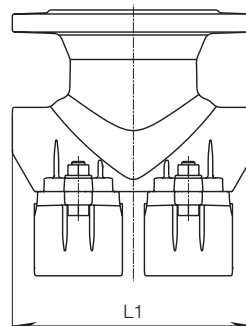
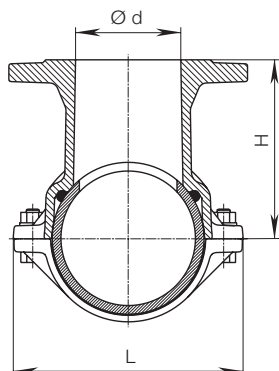
HAKU PIPE SADDLE

With flanged outlet for PE and PVC pipes

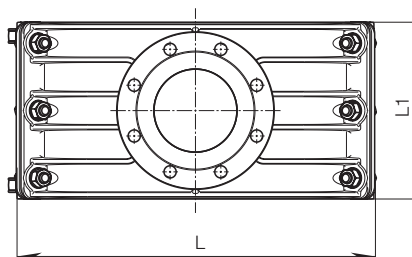
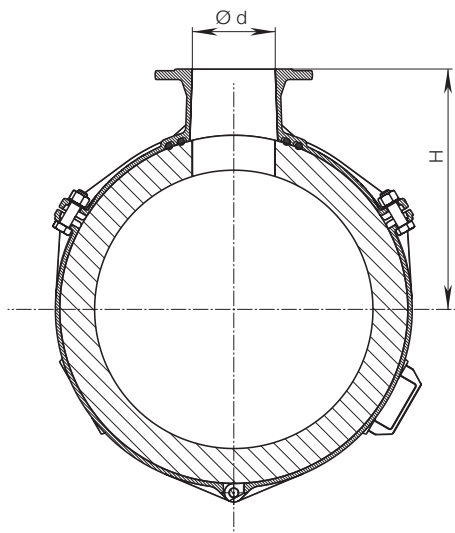


No. 5230 PE pipes EN 12201 DIN 8074 (SDR 7.4 and SDR 11) d 110-630
 PVC pipes EN ISO 1452-2 (SDR 13.5 and SDR 21) d 110-315

d 110-315



d 630



Ø Pipe	Flange DN	Ø d	H	L	L1	Weight
110	80	80	150	182	180	8,3
140	80	80	166	212	220	11,8
	100	100	166	212	220	13,3
160	80	80	176	234	220	10,1
	100	100	176	234	220	11,0
180	80	80	186	254	220	11,2
	100	100	186	254	220	12,2
200	80	80	191	270	220	11,8
	100	100	191	270	220	13,8
225	80	80	206	301	220	14,0
	100	100	206	301	220	16,0
250	80	80	221	347	220	15,3
280	150	150	239	374	285	21,0
315	80	80	255	410	285	20,0
315	150	150	257	409	285	24,5
355	150	150	298	460	320	36,2
450	150	150	345	475	320	42,0
500	150	150	370	520	320	45,2
630	150	150	435	649	320	50,2