

**Page  
C 2**

## Flange connections

For PE pipes, restraint  
*Synoflex flange*  
*System 2000 flange*

Page C 2/1  
Page E 4/1  
Page F 4/1

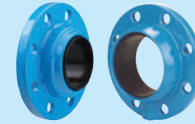


**Page  
C 3**

## Flange connections

For PVC pipes  
For AC pipes  
*Synoflex flange*  
*System 2000 flange*

Page C 3/1  
Page C 3/2  
Page E 4/1  
Page F 4/1



**Page  
C 4**

## Flange connections

For ductile iron pipes, standard, restraint  
*Synoflex flange*

Page C 4/1  
Page E 4/1

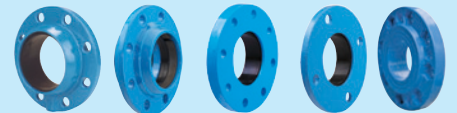


**Page  
C 5**

## Flange connections

For steel pipes, standard, restraint  
Transition flange  
*Synoflex flange*

Page C 5/1  
Page C 5/2  
Page E 4/1



**Page  
C 6**

## Threaded, blank flange XR reducing flange

Page C 6/1  
Page C 6/2



**Page  
C 7**

## Restraint systems

For PVC pipes

## Split collar

For PE and PVC pipes

Page C 7/1  
Page C 7/2



## Accessories

Bolts	Page M 4/4
Washers	Page M 4/4
Screw insulation	Page M 4/4
Flat gasket	Page M 7/1

## Spare parts

Gasket	Page P 3/2
	Page P 4/1
Grp ring	Page P 4/1
O-ring	Page P 4/2

## Technical information

Tightening torques for flange assembly	Page R 3/1
--	------------

# FLANGE CONNECTIONS

For PE pipes, restraint, PN 10 | PN 16



## Design features

- For PE pipes according to EN 12201, DIN 8074
- Flange sized in accordance with EN 1092-2, drilled in accordance with EN 1092-2 | PN 10 standard; PN 16 for DN 200 please specify on order - other standards on request

### No. 0310 / 0311:

- Flange adapter with PE fusion tail
- In a flange with a combined push-screw socket, a PE fusion socket is inserted from factory
- High performance sealing of the PE tail is assured by two separate seals and a stainless steel support liner within the tail
- The fusion of the valve in the PE line can take place through butt fusion or electrofusion socket; twisting is not permissible after fusion of the valve

### No. 5500 / 5530:

- Flange with ISO pipe socket
- The sealing and hold function acts exclusively on the external diameter of the pipe
- Corresponding to the line pressure and/or mechanical tensile forces, the seal and grip ring are pressed into the conical chamber, which increases its effectiveness
- Assembly instructions see Page K 3/2

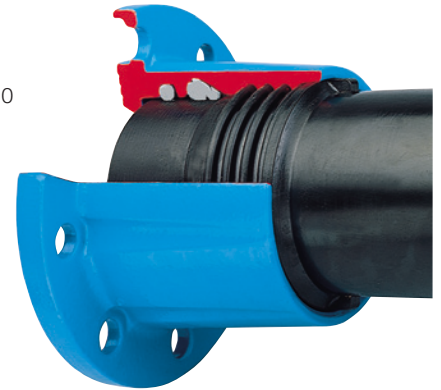
## Flange adapter with PE fusion tail

### No. 0310

PE 100 / SDR 11 - PN 16

### No. 0311

PE 100 / SDR 17,6 - PN 10



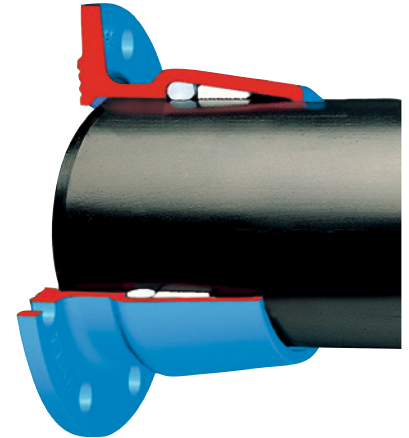
## ISO pipe flange adapter

### No. 5500

equal

### No. 5530

reducing



## Material | Technical features

- **Flange** made of ductile iron, epoxy powder coated
- **Fusion tail** made of PE 100
- **Support liners** made of stainless steel (No. 0310, No. 0311)
- **Seals** made of elastomer
- **Grip ring** made of POM

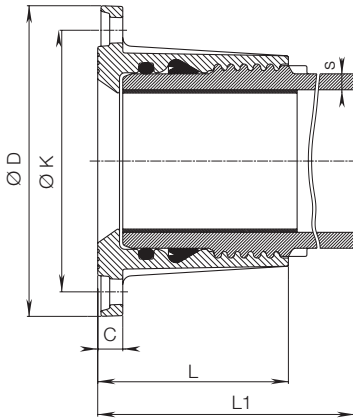
Order No.	Version	MOP (PN)	Flange DN / Ø pipe																	
			40 32	40 40	40 50	50 50	50 63	60 63	60 75	65 63	65 75	80 75	80 90	100 90	100 110	100 125	150 160	150 180	200 200	200 225
0310	Flange with PE fusion tail	16																		
0311		10																		
5500	ISO pipe flange, equal	16																		
5530	ISO pipe flange, reducing																			

# FLANGE CONNECTIONS

For PE pipes, restraint, PN 10 | PN 16

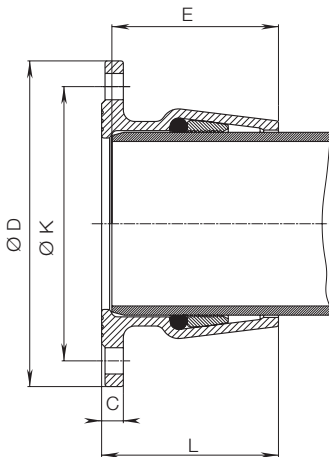


## No. 0310 / 0311



Flange DN	Ø Pipe	ØD	ØK	C	L	L1	s		Bolts		Weight
							SDR 17,6	SDR 11	Quantity	Thread	
50	63	165	125	19	106	291		5,8	4	M 16	4,0
80	90	200	160	20	125	305	5,1	8,2	8	M 16	6,7
100	110	220	180	21	142	327	6,3	10,0	8	M 16	9,3
100	125	220	180	19	190	373		11,4	8	M 16	12,4
150	160	285	240	23	175	358	9,1	14,6	8	M 20	16,0
150	180	285	240	20	260	437	10,2	16,4	8	M 20	23,0
200	200	340	295	20	210	403		18,3	8	M 20	28,0
200	225	340	295	20	210	403	12,8	20,5	8	M 20	28,0

## No. 5500



Flange DN	Ø Pipe	ØD	ØK	C	L	E	Bolts		Weight
							Quantity	Thread	
40	50	150	112	23	97	93	4	M 16	2,5
50	63	165	125	23	94	80	4	M 16	3,2
60	75	175	138	24	105	100	4	M 16	3,9
65	75	185	145	24	105	99	4	M 16	4,0
80	90	200	160	24	101	96	8	M 16	4,2
100	110	220	180	25	124	119	8	M 16	6,7

## No. 5530

Flange DN	Ø Pipe	ØD	ØK	C	L	E	Bolts		Weight
							Quantity	Thread	
40	32	150	110	19	66	62	4	M 16	1,7
40	40	150	110	21	85	80	4	M 16	2,4
50	50	165	125	23	97	93	4	M 16	3,0
60	63	175	135	24	94	90	4	M 16	3,6
65	63	185	145	24	94	90	4	M 16	4,2
80	75	200	160	24	105	100	8	M 16	5,0
100	90	220	180	25	101	96	8	M 16	5,9



# FLANGE CONNECTIONS

For PVC pipes, PN 16



## Design features

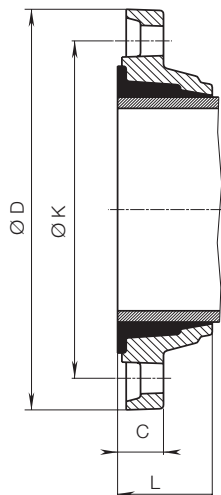
- For PVC pipes according to EN ISO 1452-2
- Flange sized according to EN 1092-2 and drilled in accordance with EN 1092-2 PN 10 standard; PN 16 for DN 200 to DN 400 please specify on order - other standards on request
- The resilience of the connection prevents tension in the pipe and minimises the danger of breakage

## Assembly instructions

- Cut the pipe end straight, do not chamfer or moisten - push the flange onto the pipe and then push the gasket on

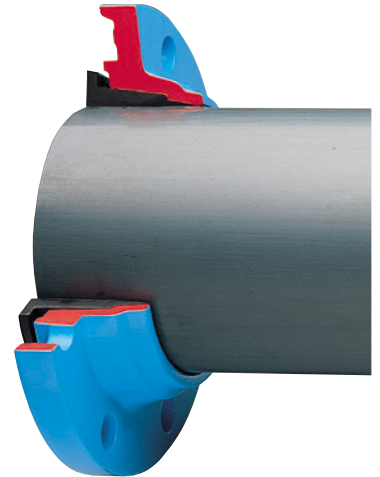
## Material | Technical features

- **Flange** made of ductile iron, epoxy powder coated
- **Sleeve gasket** made of elastomer



Flange DN	Ø Pipe	ØD	ØK	C	L	Bolts		Weight
						Qty.	Thread	
50	63	165	125	24	54	4	M 16	2,0
60	63	175	135	24	54	4	M 16	2,6
65	75	185	145	24	54	4	M 16	2,7
80	90	200	160	25	60	8	M 16	3,2
100	110	220	180	26	62	8	M 16	4,1
125	125	250	210	28	66	8	M 16	5,8
125	140	250	210	28	66	8	M 16	5,0
150	160	285	240	29	66	8	M 20	5,6
200	200	340	295	31	93	8	M 20	9,4
300	315	445	400	33	117	12	M 20	15,8
400	400	565	515	33	134	16	M 24	27,0

## Double chamber flange adapter No. 5600



Order No.	MOP (PN)	Flange DN / Ø Pipe										
		50	60	65	80	100	125	125	150	200	300	400
5600	16	63	63	75	90	110	125	140	160	200	315	400
										*1	*	*

### Explanation:

\* also available in PN 16

\* Flange with an extended hole circle are not suitable for use with fixed studs!

# FLANGE CONNECTIONS

For AC pipes, PN 16



## Design features

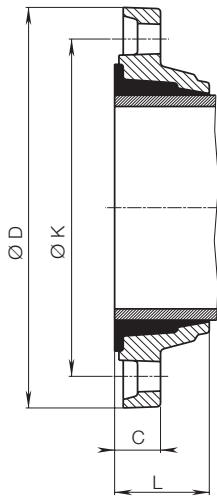
- For asbestos cement pipes
- Flange sized and drilled according to EN 1092-2 | PN16
- The long draw of the fitting and the double chambered gasket result in the pressure being spread well back from the pipe end
- The resilience of the connection prevents tension in the pipe and minimises the danger of breakage

## Assembly instructions

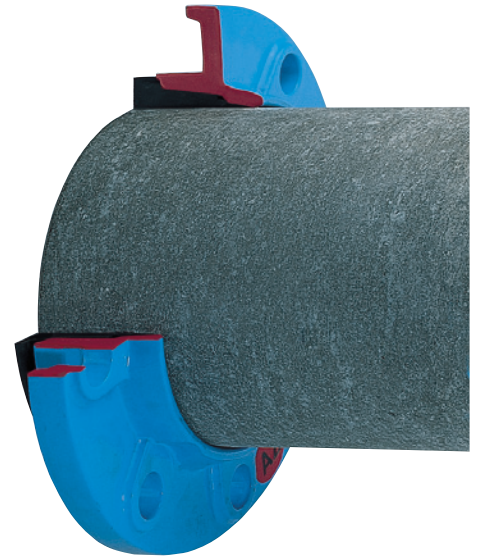
- Cut the pipe end straight, do not chamfer or moisten - push the flange onto the pipe and then push the gasket on

## Material | Technical features

- **Flange** made of ductile iron, epoxy powder coated
- **Sleeve gasket** made of elastomer



## Double chamber flange adapter No. 7103



Order No.	MOP (PN)	Flange DN / Ø Pipe			
		80 98	100 120	150 174	150 178
7103	16	x	+		+

Explanation: + also available DIN 1882, x see page C 4/1

Flange DN	Ø Pipe	ØD	ØK	C	L	Bolts		Weight
						Quantity	Thread	
100	120	220	180	23	62	8	M 16	2,8
150	174	285	240	46	66	8	M 20	5,8
150	178	290	244	48	66	8	M 20	5,8

# FLANGE CONNECTIONS

## For ductile iron pipes, PN 10 | PN 16



### Design features No. 7102

- For ductile iron pipes according to EN 545
- Flange sized and drilled in accordance with EN 1092-2, PN 10 standard; EN 1092-2, PN 16 for DN 200 to DN 400 please specify on order - other standards on request
- The long draw of the fitting and the double chambered gasket result in the pressure being spread well back from the pipe end
- The resilience of the connection prevents tension in the pipe and minimises the danger of breakage

### Assembly instructions

- Cut the pipe end straight, do not chamfer or moisten - push the flange onto the pipe and then push the gasket on

### Design features No. 7602

- For ductile iron pipes according to EN 545
- Flanges sized and drilled in accordance with EN 1092-2, PN 10 standard; EN 1092-2, PN 16 for DN 200 to DN 300 please specify on order - other standards on request
- Simultaneous pipe restraint and sealing
- This avoids the need for pipe support and additional bolts to counter the effect of axial load and pressure. This connection can be easily dismantled at any time

### Assembly instructions

- Assemble the flange with the sleeve gasket and pressure ring, and push onto the piece. Offer up the complete flange to the opposing flange, ensuring that the pressure ring projects approx. 10 mm over the end of the pipe. Cross tighten the nuts and bolts to make the connection. This fitting has the advantage that it can cope with a gap or an uneven cut that extends up to 15 mm from the opposing flange

### Material | Technical features

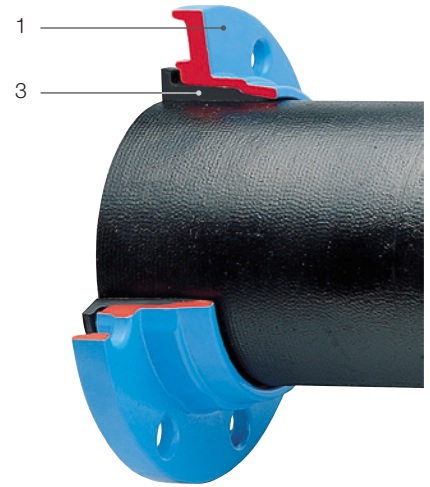
- 1 **Flange** made of ductile iron, epoxy powder coated
- 2 **Grip ring** hardened steel
- 3 **Sleeve gasket** made of elastomer
- 4 **Pressure ring** made of ductile iron, epoxy powder coated
- 5 **Seal** made of elastomer

Order No.	Version	MOP (PN)	Flange DN / Ø Pipe															
			40	50	60	60	65	80	80	100	125	150	200	250	300	400		
7102	Double chamber flange adapter, standard	16	56	66	77	82	82	98	101	118	144	170	222	274	326	429		
7602	Flange adapter, restraint											1	*1	*1	*1			
0102	Flange adapter, standard																	

**Explanation:** \* also available in PN 16, <sup>1</sup>Flange with larger an extended hole circle are not suitable for use with fixed studs!

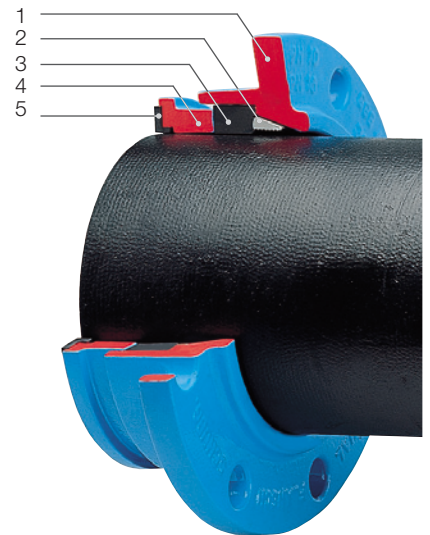
## Double chamber flange adapter

**No. 7102**  
Standard



## Flange adapter

**No. 7602**  
Restraint



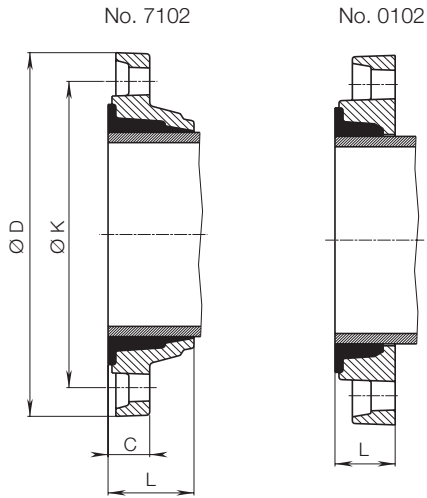
**Tip:** When shortening ductile iron pipes, observe the Ø; Heed pipe manufacturer's advice

# FLANGE CONNECTIONS

For ductile iron pipes, PN 10 | PN 16

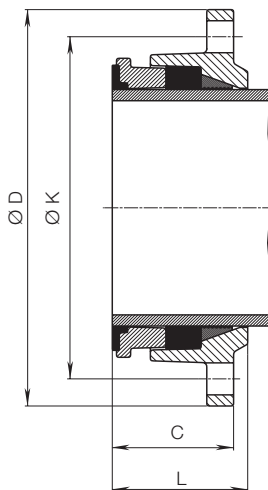


## No. 7102 / 0102



Flange DN	Ø Pipe	Ø D		Ø K	C		L		Bolts		Weight	
		7102	0102		7102	7102	0102	Quantity	Thread	7102	0102	
50	66	165		125	22	56		4	M 16	1,8		
60	77	175	175	135	28	56	35	4	M 16	3,1	2,4	
60	82		175	135			35	4	M 16		2,4	
65	82	185		145	29	58		4	M 16	3,4		
80	98	200	200	160	22	64	38	8	M 16	2,6	3,1	
80	101	200		160	22	64		8	M 16	2,4		
100	118	220	220	180	23	62	38	8	M 16	2,8	3,8	
125	144	250	250	210	24	66	42	8	M 16	4,2	5,3	
150	170	285	285	240	25	66	45	8	M 20	4,7	7,0	
200	222	340	340	295	30	71	45	8	M 20	7,6	10,5	
250	274	400		350	32	78		12	M 20	10,9		
300	326	455		400	33	82		12	M 20	13,8		
400	429	570	580	515	37	103	61	16	M 24	22,0	22,5	

## No. 7602



Flange DN	Ø Pipe	Ø D	Ø K	C	L	Bolts		Weight
						Quantity	Thread	
40*	56	150	110	26	58	4	M 16	1,6
50	66	165	125	60	71	4	M 16	2,9
60	77	175	135	60	73	4	M 16	3,2
65	82	185	145	63	79	4	M 16	3,7
80	98	200	160	59	76	8	M 16	3,9
80	101	200	160	59	76	8	M 16	3,5
100	118	220	180	60	78	8	M 16	4,6
125	144	250	210	62	85	8	M 16	6,0
150	170	285	240	87	98	8	M 20	9,3
200	222	340	295	90	105	8	M 20	14,0
250	274	400	355	90	105	12	M 20	17,5
300	326	455	405	90	105	12	M 20	21,7

\* DC flange with thread pin

# FLANGE CONNECTIONS

For steel pipes, PN 16



## Design features No. 7101

- For steel pipes according to EN 10220
- Flanges sized and drilled in accordance with EN 1092-2, PN 10 standard; EN 1092-2, PN 16 for DN 200 to DN 300 please specify on order - other standards on request
- The long draw of the fitting and the double chambered gasket result in the pressure being spread well back from the pipe end
- The resilience of the connection prevents tension in the pipe and minimises the danger of breakage

## Assembly instructions

- Cut the pipe end straight, do not chamfer or moisten - push the flange onto the pipe and then push the gasket on

## Design features No. 7601

- For steel pipes according to EN 10220  
Flange sized and drilled in accordance with EN 1092-2, PN 10 standard; EN 1092-2, PN 16 for DN 200 to DN 250 please specify on order - other standards on request
- Simultaneous pipe restraint and sealing
- This avoids the need for pipe support and additional bolts to counter the effect of axial load and pressure. This connection can be easily dismantled at any time

## Assembly instructions

- Assemble the flange with the sleeve gasket and pressure ring, and push onto the pipe. Offer up the complete flange to the opposing flange, ensuring that the pressure ring projects approx. 10 mm over the end of the pipe. Cross tighten the nuts and bolts to make the connection. This fitting has the advantage that it can cope with a gap or an uneven cut that extends up to 15 mm from the opposing flange

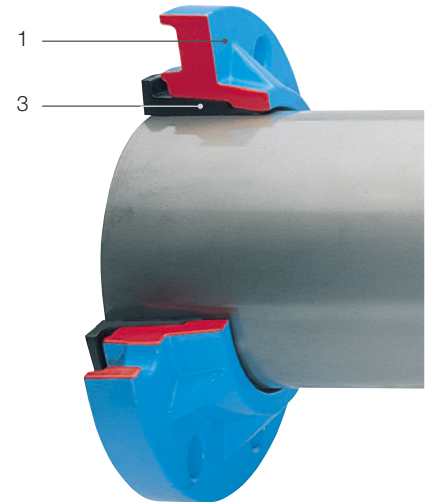
## Material | Technical features

- 1 **Flange** made of ductile iron, epoxy powder coated
- 2 **Grip ring** hardened steel
- 3 **Sleeve gasket** made of elastomer
- 4 **Pressure ring** made of ductile iron, epoxy powder coated
- 5 **Seal** made of elastomer

## Double chamber flange adapter

### No. 7101

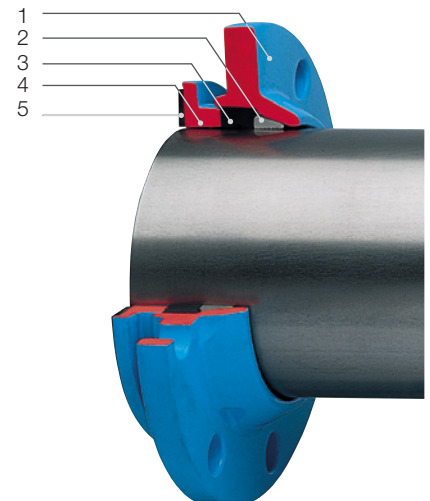
Standard



## Flange adapter

### No. 7601

Restraint



Order No.	Version	MOP (PN)	Flange DN / Ø Pipe																	
			40	50	50	60	65	80	80	100	100	100	125	150	150	200	250	250	400	500
7101	Double chamber flange adapter, standard	16	48	56-57	59-61	67	76	84	89	104-106	108	114	133	159	168	219	267	273	419	508
7601	Flange adapter, restrained											1				1		*x		
0101	Spar flange, standard																			

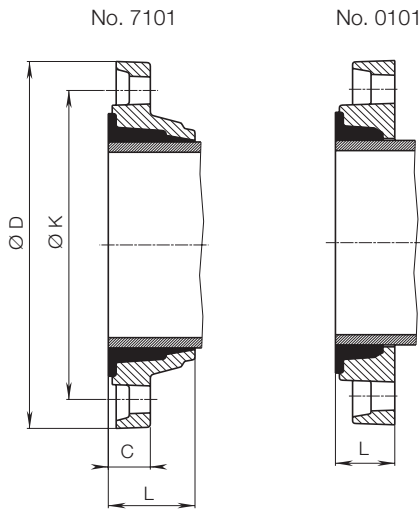
**Explanation:** \* also available in PN 16, \*see page C 4/1  
<sup>1</sup> Flange with larger an extended hole circle are not suitable for use with fixed studs!

# FLANGE CONNECTIONS

For steel pipes, PN 16

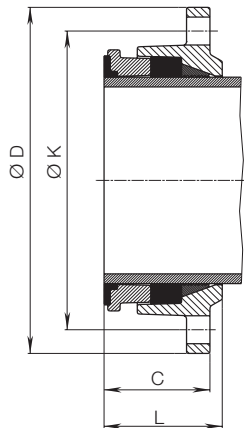


## No. 7101 / 0101



Flange DN	Ø Pipe	Ø D		Ø K	C		L		Bolts		Weight	
		7101	0101		7101	0101	Quantity	Thread	7101	0101		
40	48		150	110			30	4	M 16		0,9	
50	56-57	165		125	26	54		4	M 16	2,6		
50	59-61	165		125	26	54		4	M 16	2,6		
60	67		175	135			37	4	M 16		2,5	
65	76	185		145	28	56		8	M 16	3,5		
80	84		200	160			37	8	M 16		3,48	
80	89	200	200	160	26	65	37	8	M 16	4,2	3,2	
100	104-106		220	180			38	8	M 16		4,39	
100	108	220	220	180	25	63	38	8	M 16	3,6	4,4	
100	114	220		180	23	63		8	M 16	4,4		
125	133	250		210	33	64		8	M 16	6,8		
150	159		285	240			45	8	M 20		7,50	
200	219	340		295	30	71		8	M 20	8,6		
250	267		400	350			48	12	M 20		14,5	
400	419		565	515			60	16	M 24		20,0	
500	508		690	620			76	20	M 24		50,9	

## No. 7601



Flange DN	Pipe Ø	Ø D	Ø K	C	L	Bolts		Weight
						Quantity	Thread	
50	60	165	125	39	61	4	M 16	2,7
65	76	185	145	38	61	4	M 16	3,5
80	89	200	160	39	67	8	M 16	3,9
100	108	220	180	39	69	8	M 16	4,7
100	114	220	180	44	69	8	M 16	4,4
125	133	250	210	39	69	8	M 16	5,7
150	159	285	240	49	73	8	M 20	7,8
150	168	285	240	49	73	8	M 20	7,5
200	219	340	295	52	81	8	M 20	10,5

### Design features

- From 4 hole to 8 hole
- Made of ductile iron, epoxy powder coated
- PN 16

DN	MOP (PN)	Length	Weight
80	16	42	5,0

## Transition flange

### No. 0800

DN 80





# THREADED, BLANK FLANGE



## Design features

- Made of ductile iron, epoxy powder coated
- Flange sized according to EN 1092-2 and drilled in accordance with EN 1092-2 | PN 10 standard; PN 16 for DN 200 to DN 300 please specify on order - other standards on request

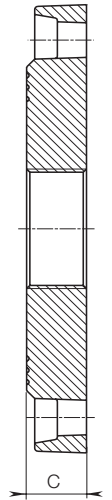
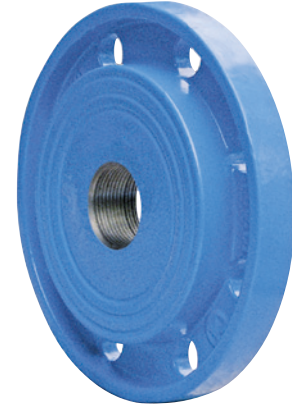
DN	MOP (PN)	Thread No. 8100						Thread No. 8100L							
		1"	1¼"	1½"	2"	2½"	3"	4"	1"	1¼"	1½"	2"	2½"	3"	4"
40	10														
50															
60															
65															
80															
100															
125															
150															
200															
250															
300															

## Threaded flange

**No. 8100**

**No. 8100L**

with internal thread ISO 228



DN	MOP (PN)	C	Weight No. 8100							
			1"	1¼"	1½"	2"	2½"	3"	4"	
40	10	19			1,80	1,70				
50			2,30	2,20	2,20	2,10				
60						3,00				
65			3,20	3,10	3,00	3,00	2,70			
80			3,60	3,50	3,40	3,40	3,40	2,90		
100		4,30	4,20	4,20	4,20	3,90	3,70	3,30		
125		5,40	5,50	5,50	5,30	5,20	5,10	4,70		
150		7,00	6,90	6,90	6,80	6,70	6,60	6,20		
200		20	11,50	11,30	11,30	11,00	10,60	10,30		
250		22			16,20	16,00	15,00			
300	25				23,10					

DN	MOP (PN)	C	Weight No. 8100L						
			1"	1¼"	1½"	2"	2½"	3"	4"
50	10	32	2,70	2,60	2,60	2,50			
60			3,40	3,20	3,00	2,80	2,60		
65			3,40	3,20	3,00	2,80	2,60		
80			4,00	3,90	3,90	3,90	3,80	3,40	
100			5,90	5,70	5,70	5,50	5,20	4,80	4,50
125		8,20	8,10	8,10	7,90	7,50	7,00	6,60	
150		9,50	9,30	9,20	9,10	8,70	8,50	8,10	
200		15,50	15,40	15,30	15,10	14,80	14,50	14,20	

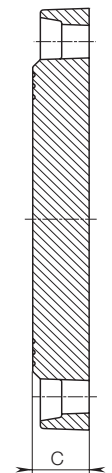
## Design features

- Made of ductile iron, epoxy powder coated
- Flange sized according to EN 1092-2, and drilled in accordance with EN 1092-2, | PN 10 standard; PN 16 for DN 200 to DN 400 please specify on order - other standards on request
- Other nominal diameters on request

DN	MOP (PN)	C	Weight
40	10	19	2,00
50			2,90
60			2,80
65			3,80
80			4,00
100		4,60	
125		5,70	
150		7,60	
200		20	11,40
250		22	17,20
300	25	25,50	
400		38,00	

## Blank flange

**No. 8000**



# XR REDUCING FLANGE



## Design features

- Made of ductile iron, epoxy powder coated
- Flange sized and drilled according to EN 1092-2
- Threaded bolts made of stainless steel
- The low profile enables transitions to be made between dimensions in the shortest possible space

Standard version: flange hole PN 10 (PN 16 on request)

DN	MOP (PN)	Bolts DN 1		Bolts DN 2		C	Weight
		Qty.	Thread	Qty.	Thread		
65-50	10	4	M 16 x 50	4	M 16 x 50	47	5,6
80-40		8	M 16 x 50	4	M 16 x 50	30	5,1
80-50		8	M 16 x 50	4	M 16 x 50	29	5,6
80-65		8	M 16 x 50	4	M 16 x 50	25	5,4
100-50		8	M 16 x 50	4	M 16 x 50	27	5,5
100-65		8	M 16 x 50	4	M 16 x 50	30	6,5
100-80		8	M 16 x 50	4	M 16 x 50	47	8,4
125-65		8	M 16 x 50	4	M 16 x 50	30	8,2
125-80		8	M 16 x 50	8	M 16 x 50	30	8,0
125-100		8	M 16 x 50	8	M 16 x 50	30	7,6
150-100		8	M 20 x 60	8	M 16 x 50	30	12,0
150-125		8	M 20 x 60	8	M 16 x 50	30	11,2
200-150		8	M 20 x 60	8	M 20 x 60	30	17,2
200-150		12	M 20 x 60	8	M 20 x 60	30	18,7
250-200		12	M 20 x 60	8	M 20 x 60	32	20,0
250-200		12	M 24 x 70	12	M 20 x 60	32	22,0
300-250		12	M 24 x 70	12	M 24 x 70	33	32,4

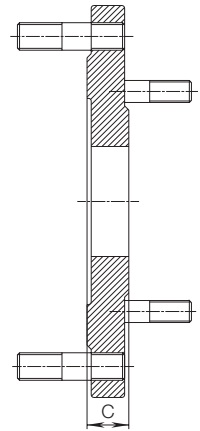
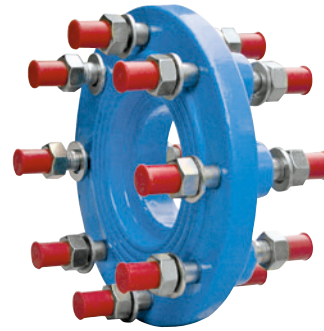
Other diameters on request

Standard version: flange hole PN 10 (PN 16 on request)

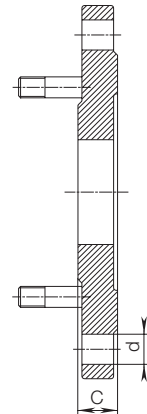
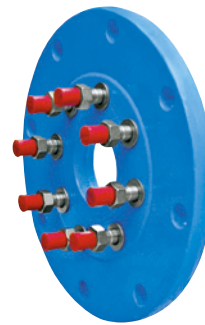
DN	MOP (PN)	Bolts DN 1		Bolts DN 2		C	Weight
		Qty.	d	Qty.	Thread		
125-50	10	8	19	4	M 16 x 50	30	6,3
150-50		8	23	4	M 16 x 50	30	11,0
150-65		8	23	4	M 16 x 50	30	11,0
150-80		8	23	8	M 16 x 50	30	10,7
200-80		8	23	8	M 16 x 50	30	14,7
200-80		12	23	8	M 16 x 50	30	14,5
200-100		8	23	8	M 16 x 50	30	15,0
250-125		12	23	8	M 16 x 50	31	13,7
250-50		12	23	4	M 16 x 50	31	22,3
250-50		12	28	4	M 16 x 50	31	22,3
250-80		12	23	8	M 16 x 50	31	22,1
250-80		12	28	8	M 16 x 50	31	22,1
250-100		12	23	8	M 16 x 50	31	21,9
250-150		12	23	8	M 20 x 60	40	18,6
250-150		12	28	8	M 20 x 60	40	18,6
300-100		12	23	8	M 16 x 50	31	27,1
300-100		12	28	8	M 16 x 50	31	27,1
300-200		12	23	8	M 20 x 60	32	24,8
400-300		16	28	12	M 20 x 60	39	39,8

Other diameters on request

## XR reducing flange „Type A” No. 0801



## XR reducing flange „Type B” No. 0802





# RESTRAINT SYSTEMS

For PVC pipes, PN 10 | PN 16



## Design features

- The restraint clamp for PVC pipe fittings and pipes according to EN ISO 1452-2
- This two-part body can be assembled onto an existing pipeline. If required it can be dismantled and reused
- The grip ring is self tightening within its tapered seating
- The design of the teeth avoids cutting into the pipe resulting in the highest gripping force without pipe damage
- Wedge fastening on both sides
- Hammer the wedges until the clamp is tightly closed

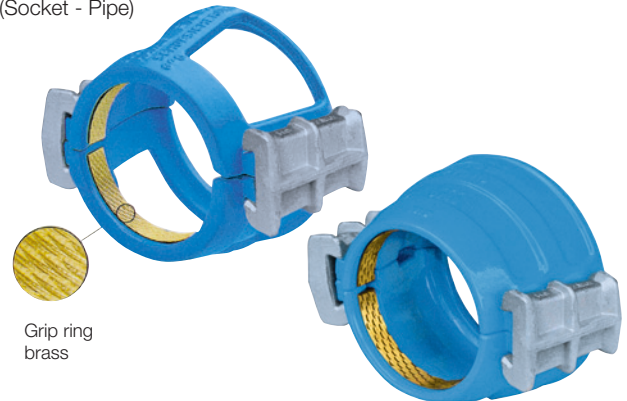
## Material | Technical features

- **Body** made of ductile iron, epoxy powder coated
- **Grip ring** made of brass
- **Wedge fastener** made of ductile iron, galvanised epoxy powder coated

## Restraint clamp

No. 1254 / 1255

(Socket - Pipe)



Grip ring  
brass

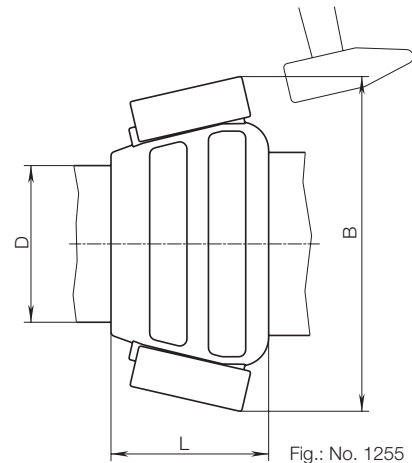


Fig.: No. 1255

DN	ØPVC-Pipe	B		L		Weight
		1254	1255	1254	1255	
50	63	180		91		2,5
65	75	200		96		2,8
80	90	220		103		3,0
100	110	240		110		3,5
125	140	280		123		3,9
150	160	300	320	140	152	6,0
200	225	380	400	165	185	9,5
250	280	455		195		13,5
300	315	495		200		16,3

Order No.	Version	MOP (PN)	Dimension/DN ØPVC-Pipe											
			50	65	80	100	125	150	200	250	300			
1254	Restraint clamp	10	*	*	*									
1255		16												

\*PN 10 and PN 16

## Application example



# SPLIT COLLAR

## For PVC and PE pipes



### Design features

- For PVC pipes according to EN ISO 1452-2
- For PE pipes according to EN 12201, DIN 8074 (thin wall PE pipes  $\leq$  SDR 17 need support liners)
- Restraint connection for two spigot ends. It can also be used as a repair coupling
- The teeth of the grip ring do not abrade the pipe. It is not necessary to chamfer the pipe
- Also suitable as transition from PVC to PE pipes

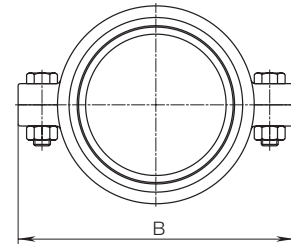
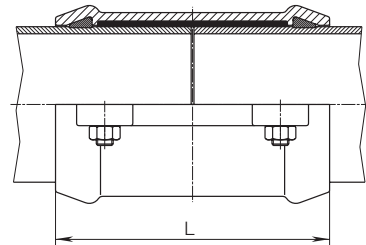
### Material | Technical features

- **Body** made of ductile iron, epoxy powder coated
- **Grip ring** made of brass
- **Bolts** made of stainless steel
- **Seal** made of elastomer

## Split collar

**No. 9240**

(pipe - pipe)



DN	ØPVC-Pipe	B	L	Weight
50	63	144	164	3,4
65	75	156	170	3,5
80	90	174	174	4,5
100	110	196	195	5,3
125	125	214	195	7,0
125	140	228	220	7,3
150	160	254	245	10,5
200	200	308	316	19,5
200	225	332	350	21,0

Order No.	Version	MOP (PN)	Dimension/DN ØPVC-Pipe																	
			50	65	80	100	125	125	150	200	200									
9240	Split collar	10	63	75	90	110	125	140	160	200	225									