

E2 HAWLE-COMBIFLEX

PN 10 | PN 16



Design features

- Modular Combi-valve system enables flexible assembly arrangements
- Standardized compact construction regardless of valve configuration
- Suitable for cleaning with a cleaning pig
- Comprehensive range of interchangeable ZAK connections possible in every module
- Unique design facilitates easy, rapid exchange of any module
- Duplex stainless steel spindle

Material | technical features

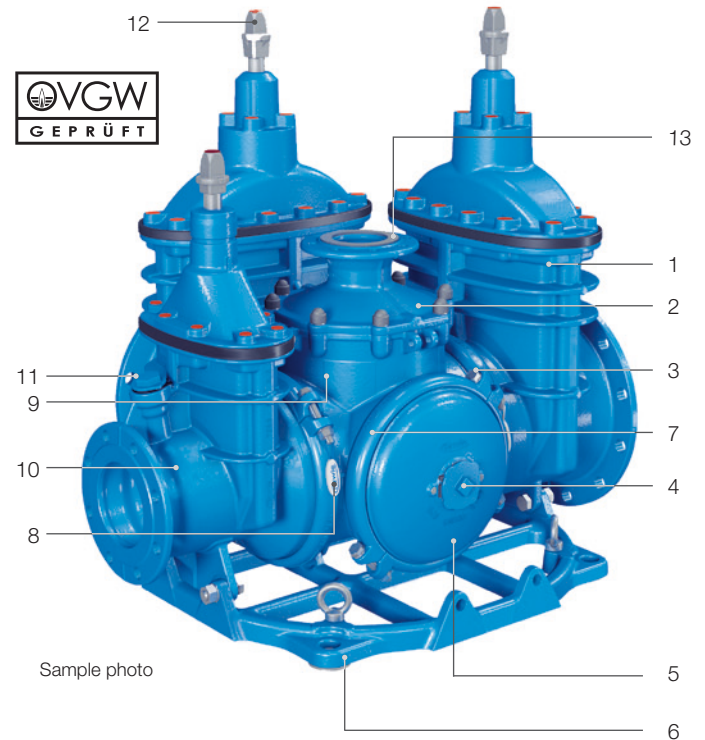
- Resilient seated E2 valve** in DN 150 to DN 400 according to EN 1074-1 and 2
- Molybdenum coated, A4 type **clamping ring bolts**
- ZAK-69** (4) or **ZAK-46** (11) socket for corrosion-free connection of sensors or ZAK Service valve
- 2/5/7/ DN 100 or DN 150 **end cap** (5), **clamping ring** (7), 2 types of **middle section** DN 250 or DN 300 (9), **E2 body** (10) reduced in DN 150 and DN 200 or expanded to DN 400: ductile iron, epoxy powder coated
- HAWLE-COMBIFLEX mounting frame**: ductile iron, epoxy powder coated, with ring bolts for fastening hoists and integrated rings for floor connections
- Quality inspection seal**
- Operating cap** made of aluminum, including covering cap with direction indicator
- Vertical outlet with affixed flat elastomer gasket

Suitable accessories

Suitable accessories: see page A 1/2

Handwheel:		No. 7800
Extension spindles:	rigid	No. 9000E2
	telescopic	No. 9500E2
Surface boxes:	rigid	No. 1750
	telescopic	No. 2050, No. 2051K
Operating cap:		No. 2156, No. 2157, No. 2158
Extension spindle:		No. 7820, No. 7825
Bolts:		No. 8810, No. 8830, No. 8840
Ground-distance sets:		No. 8644
Flat gasket:		No. 3390, No. 3470

No. 4420E2



Individual combination options



see A 9/3

Application example



Order no.	Version	MOP (PN)	Dimensions / DN	Possible reduction / DN	Possible vertical outlet / DN	Max. Weight
4420E2	Individually configurable	10	250	150	100	465
		16		200	150	
		250				
		10	300	150	100	706
		16		200	150	
		300				
			400			

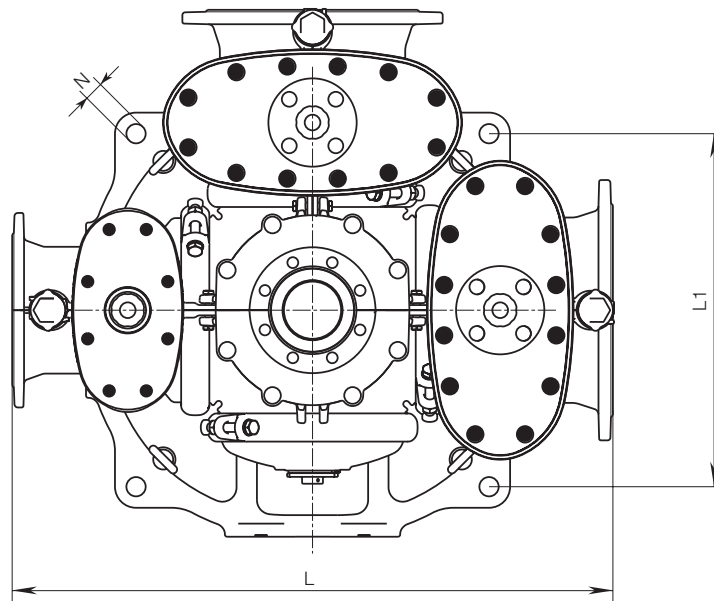
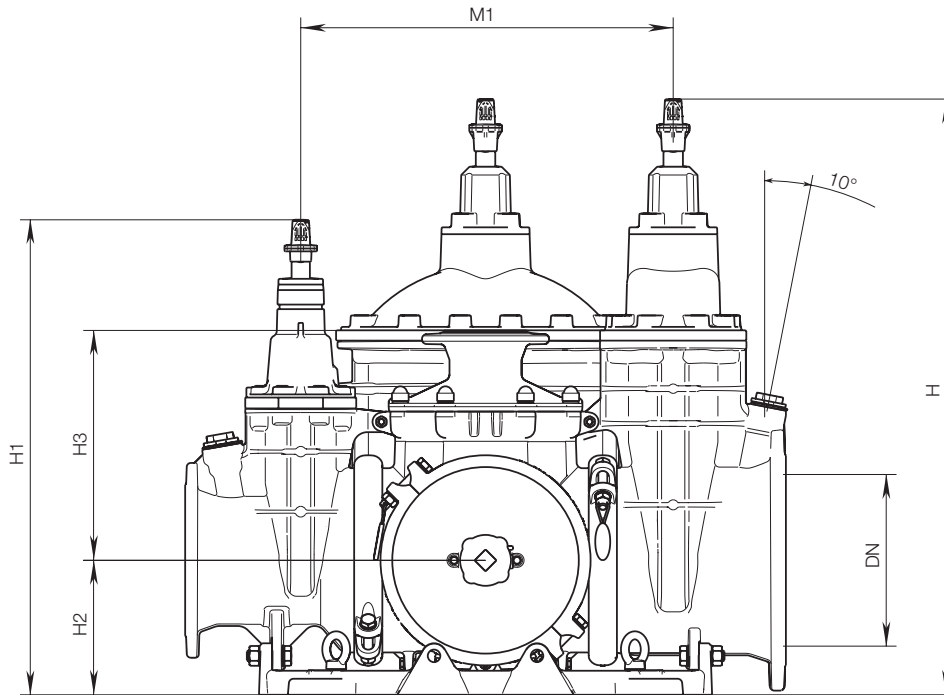
Flange sized and drilled in accordance with EN 1092-2 standard PN 10. Please specify PN 16 when ordering. Please use the HAWLE-COMBIFLEX order form. It can be found on our homepage.

E2 HAWLE-COMBIFLEX

PN 10 | PN 16



No. 4420E2

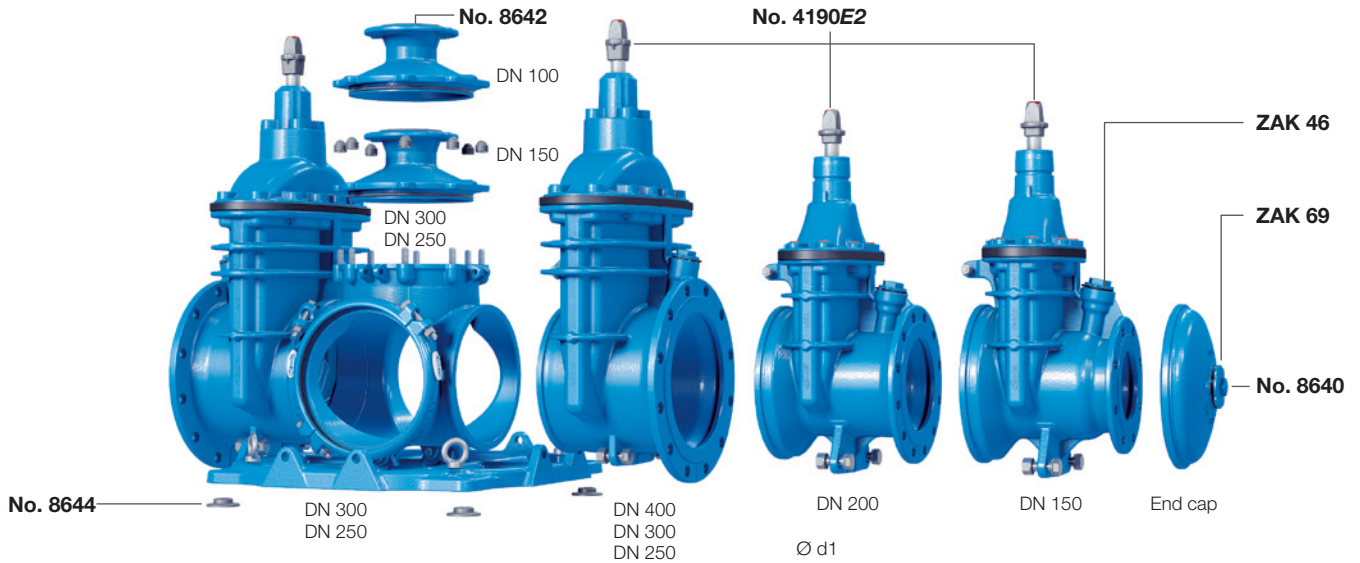


DN	HAWLE-COMBIFLEX										
	MOP (PN)	L*	L1	H	H1	H2	H3	DN	M1*	Ø N	max.
250	10	960	617	932	777	210	359	150	590	34	465
	16							200			
	250										
300	10	1050	617	1043	830	235	399	150	646	34	706
	16							200			
	300										
	400										

*The external dimensions (L, M1) remain the same with reducing valves!

E2 HAWLE-COMBIFLEX

Individual parts

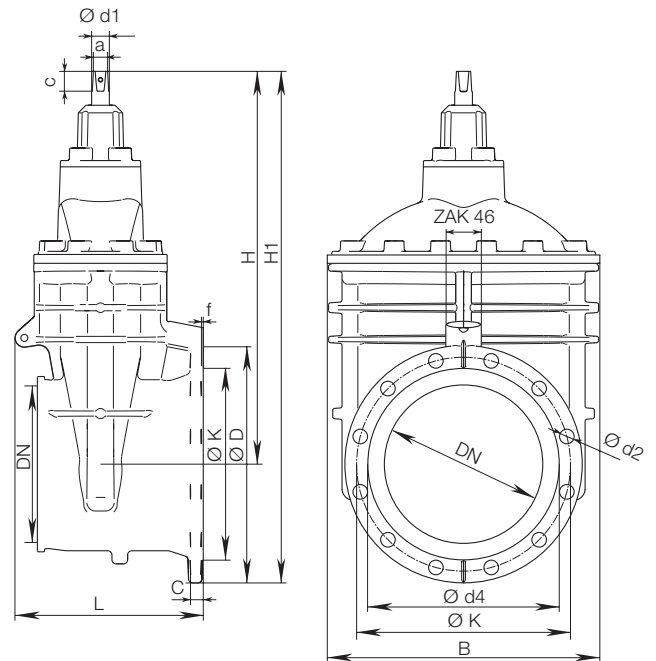
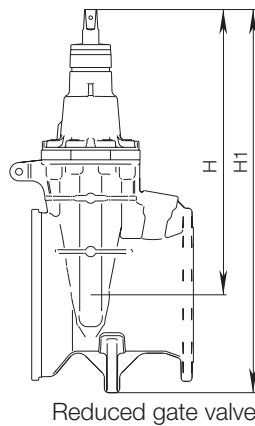


HAWLE-COMBIFLEX E2 gate valve No. 4190E2



ZAK 46

- ZAK 46 socket
- Incl. ZAK 46 plug
- Incl. operating cap
- Incl. bolt fastener
- Fits through man hole openings



DN	HAWLE-COMBIFLEX E2 gate valve																			
	Flange							Bolts			Spindle			Valve						
	DN	MOP (PN)	Ø D	C	Ø K	Ø d4	f	Qty.	Thread	Ø d2	a	c	Ø d1	Wedge DN	Service outlet	H	H1*	L*	B*	Weight
250	150	10 16	285	19	240	209	3	8	M20	23	24,3	48	32	200	ZAK 46	561	727	337	356	61,0
	200	10 16	340	20	295	264	3	8 12	M20	23	24,3	48	32	200	ZAK 46	561	730	337	356	62,0
		10 16	400	22	350 355	319	3	12	M20 M24	23 28	27,3	48	34	250	ZAK 46	670	870	337	438	89,0
300	150	10 16	285	19	240	209	3	8	M20	23	24,3	48	32	200	ZAK 46	561	754	361	356	65,0
	200	10 16	340	20	295	264	3	8 12	M20	23	24,3	48	32	200	ZAK 46	561	754	361	356	66,0
		10 16	455	24,5	400 410	367	4	12	M20 M24	23 28	27,3	48	34	300	ZAK 46	753	981	361	523	132,0
	400	10 16	580	28	515 525	477	4	16	M24 M27	28 31	27,3	48	34	300	ZAK 46	753	1050	361	523	146,0

* Transport dimensions

E2 HAWLE-COMBIFLEX

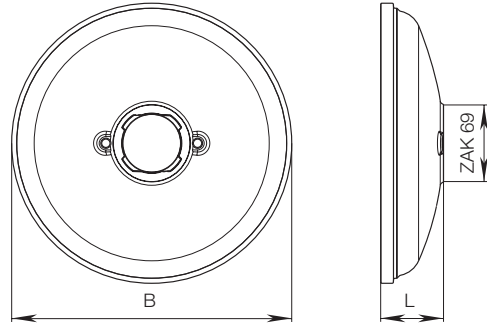
Individual parts



HAWLE-COMBIFLEX end cap No. 8640



- ZAK 69 socket

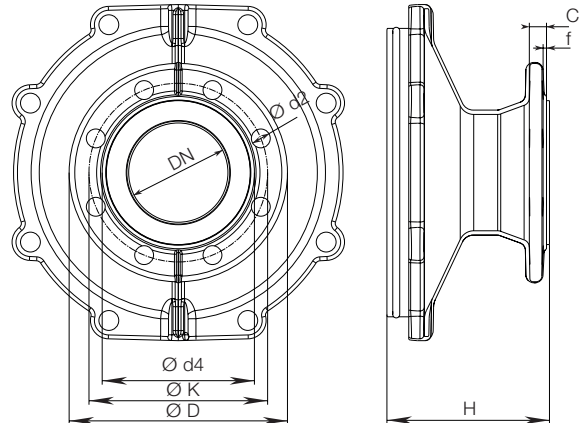


DN	HAWLE-COMBIFLEX end cap			
	B	ZAK-socket	L	Weight
250	284	ZAK 69	67	5,5
300	335	ZAK 69	77	8,0

HAWLE-COMBIFLEX vertical outlet No. 8642



- Incl. affixed elastomer flange gasket



DN	HAWLE-COMBIFLEX vertical outlet											
	Flange							Bolts			Vertical outlet	
	DN	MOP (PN)	Ø D	C	Ø K	Ø d4	f	Qty.	Thread	Ø d2	H	Weight
250	100	10	220	19	180	153	3	8	M16	17	146	12,0
		16										
	150	10	285	19	240	209	3	8	M20	23	146	11,0
		16										
300	100	10	220	19	180	153	3	8	M16	17	160	13,0
		16										
	150	10	285	19	240	209	3	8	M20	23	160	13,0
		16										

HAWLE-COMBIFLEX ground-distance set No. 8644 (order separately)

Stainless steel

