

Order no.	Version	PN	Dimension/DN									
			40	50	65	80	100	125	150	200	250	300
9830	without lever and counterweight	16	●		●			●			●	●
9831				●		●	●		●	●		

Reliable prevention of medium back flow by automatic mechanical closing of the Non-return valve.

The disc opens automatically, if the medium flows in the direction indicated by the arrow on the valve body.

Face-to-face dimensions according EN 558-1 GR 48 (DIN 3202 T1 - F6)

No. 9831

Design features:

- reduced weight
- simple cleaning
- fully corrosion free
- optimised velocity
- simple maintenance
- PN 25 (on request)

opening pressure min. 0,03 bar
closing pressure min. 0,5 bar (tight)



Installation Instructions:

- In general Non Return Valves are designed to be installed in horizontal pipe lines. An installation in sloping and vertical pipe lines is possible if the flow of the medium is upwards.

Material:	9831	9830
Body	Ductile iron GJS 400/500 epoxy-powder coated	Grey iron, epoxy powder coated
Disc/ disc lever	Elastomer/polyamide (suitable for potable water)	
Bolts, nuts	Stainless steel A2	Stainless steel A2
Disc gasket	Elastomer (suitable for potable water)	Klingerit
Shaft	Polyamide	
Gaskets		Elastomer (suitable for potable water)

No. 9830

Design features:

- with lever and counterweight (on request)
- opening pressure min. 0,03 bar
closing pressure min. 0,1 bar (tight)

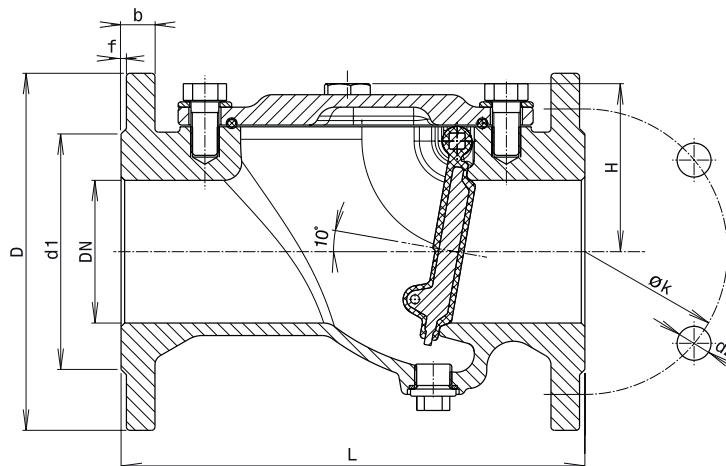


- Direction of flow has to be according to the arrow indicated on the body. Axle of the disc shaft has to be fully horizontal.

Non Return Valve

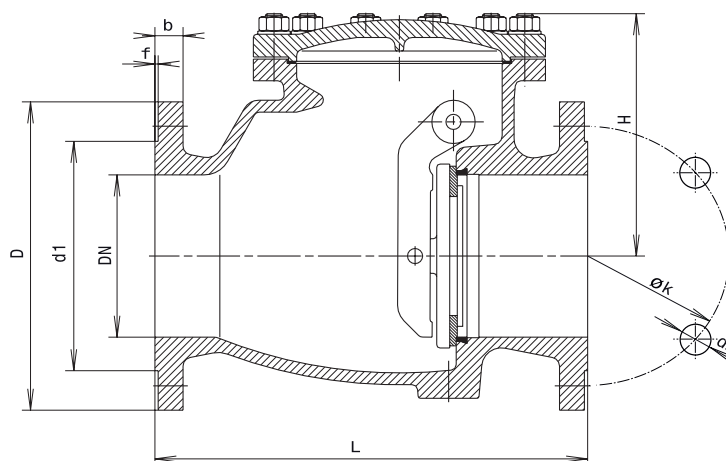
No. 9831

without lever and counterweight



No. 9830

without lever and counterweight



Flanges to EN 1092-2 (DIN 28605), drilled to DIN 2501-PN 10 (standard); for DIN 2501-PN 16 in sizes of DN 200 mm and above please specify on order; other standards on request!

DN	PN	L	H	D	d 1	k	d 2	f	b	Bolts	Kv m ³ /h	Weight kg
40	16	180	119	150	88	110	19	3	18	4 x M 16	60	9,0
50	16	200	77	165	102	125	19	3	19	4 x M 16	170	9,5
65	16	240	141	185	122	145	19	3	20	4 x M 16	163	15,0
80	16	260	95	200	138	160	19	3	19	8 x M 16	366	14,5
100	16	300	113	220	158	180	19	3	19	8 x M 16	698	22,5
125	16	350	199	250	188	210	19	3	26	8 x M 16	588	46,0
150	16	400	155	285	212	240	23	3	19	8 x M 20	1489	45,0
200	10	500	187	340	268	295	23	3	20	8 x M 20	1388	82,0
	12 x M 20											
250	10	600	337	405	320	350	23	3	32	12 x M 20	180,0	
	16					355	27			12 x M 24		
300	10	700	374	460	378	400	23	4	32	12 x M 20	270,0	
	16					410	27			12 x M 24		