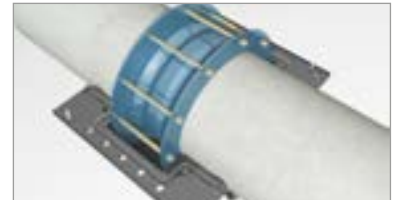
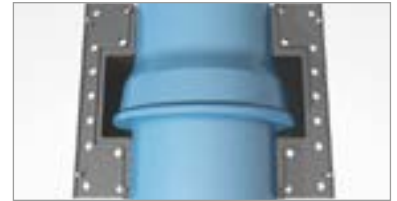


# ENCAPSULATION COUPLING IN TWO PIECES FOR PIPE REPAIR AND HOT TAPPING WITHOUT FLOW INTERRUPTION

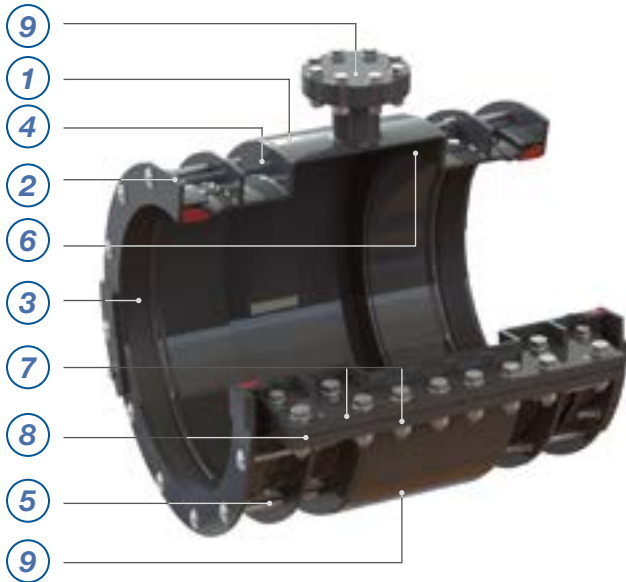


VERSIONS	D30 / D10 / D20-D	
	STANDARD	OPTIONS
<b>NOMINAL SIZES DN</b>	300 - 2000 and bigger	Hot tapping version
<b>PN</b>	From PN 10 to PN 25 and higher ratings	
<b>MEDIUM</b>	Potable and raw water	Sea water
<b>BODY</b>	Carbon steel	
<b>COMPRESSION RINGS</b>	Carbon steel	
<b>SEALING GASKETS</b>	EPDM rubber	NBR, NEOPRENE
<b>COMPRESSION BOLTS</b>	Steel with dacromet coating	Grade 304 / 316 stainless steel
<b>COATING</b>	Rilsan Nylon 11	
<b>RANGE Ød</b>	30 mm	
<b>ANGULAR DEFLECTION</b>	From DN300 to DN1000 = +/-3° on each side with coupling ends*	
<b>ANGULAR DEFLECTION</b>	From DN1000 to DN2000 = +/-2° on each side with coupling ends*	

\*average datum in the middle of the range

# DESIGN FEATURES

## OF DUOFIT COUPLING IN TWO PIECES FOR PIPE REPAIR AND HOT-TAPPING



### 1 Central body

Carbon steel central body conveniently built in order to allow a perfect insertion of the gasket inside its dedicated conical seat.

### 2 Compression ring

Carbon steel compression followers which allow compression of the gasket onto the pipe surface upon tightening the bolts.

### 3 Gasket

Truncated-cone sealing gasket which can be perfectly inserted between the central body of the coupling and the circumference of the pipe. It allows a complete hydraulic seal and a 30mm tolerance range on the pipe OD.

### 4 Bolt holes

Round or square holes for the bolt installation.

### 5 Compression bolts

The compression bolts allow the approaching of the compression flanges and the consequent compression of the gasket onto the pipe.

### 6 Shaping

Manufactured in carbon steel, designed according to the length and the diameter of the pipe or of the sleeve to be repaired, in order to perfectly cover them.

### 7 Lateral plates

Manufactured in carbon steel, they allow the union of the two longitudinal shells of the DUOFIT allowing the repairing of the leak.

### 8 Lateral gasket

Lateral gasket with square section, it is compressed between the lateral plates and allows the hydraulic seal along the entire length of the Duofit.

### 9 Upper and lower outlets

They allow the DUOFIT assembly decreasing the pressure during the installation. They are also used in order to test the DUOFIT tightness once the installation is completed.

### 10 Straight version

Straight version for repairing pipeline straight sections.

### 11 Separate followers version

The bolts tightening is independent in order to improve the coupling centering and the performances of the gasket.